

## Rendezvous Collection

### 10mm Radius Undermount Double Bowl

#### Sliding Platform System

#### Model : REN-16-3218D

**\*\*Installation note:** Recommended minimum of 3/4" between front of faucet base and rear edge of sink cut-out for cutting board clearance\*\*

#### FEATURES

- Premium grade T-304 stainless steel
- Handmade sink with scored bottom
- 9" depth • 16 gauge
- TotalGuard+ Insulation over Sound Deadening Pads
- StoneShield Undercoating
- Brushed satin, rear-set drain
- 3-1/2" drain opening • Fits 36" sink base
- Supplied with cutout template, fasteners and instructions
- All accessories designed to fit platform ledge except cutting board
- Includes : Wood Cutting Board, Drying Tray, Multi-Purpose Roll-Up Mat, Bottom grids, Stainless Steel Basket Strainer.

- Lifetime Limited Warranty

**TYPE 304**  
PREMIUM STAINLESS STEEL

**totalguard+**  
SOUND DEADENING PADS

**SOUND**  
DEADENING PADS

**Lifetime**  
Warranty

#### OPTIONAL ACCESSORIES

Bottom Grid: SWG-1815 , SWG-1115 Roll-Up Mat: ROL-1416

Drying Tray: DRY-716 Cutting Board : CUT-1418

Strainer: BAS-2000-SS

OVERALL DIMENSIONS	EACH BOWL	CUTOUT SIZE	PACKAGING*	WEIGHT*
31-9/16" x 17-13/16"	18" x 15-1/4" 11" x 15-1/4"	See Template	1/12 pcs.	40/520 lbs.

\*Standard packaging: Single boxed /Pallet of single boxed.

All dimensions are in inches. Specifications subject to change without notice.

Project/Job name

Architect/Engineer

Contractor

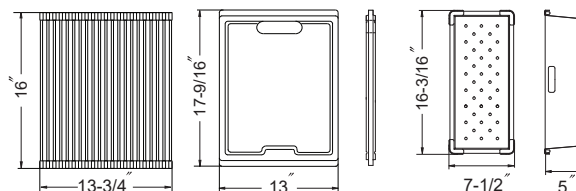
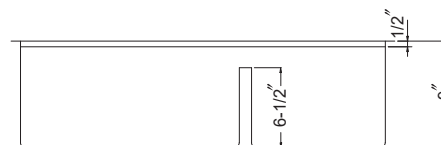
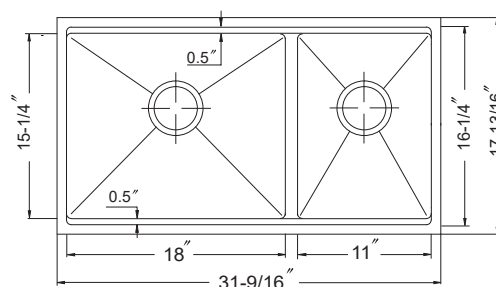
Model

Qty

Notes



Lorem ipsum  
REN-16-3218D



#### Installation profile

